

Cie József Trefeli
"Creature"
Technical Requirements

"Creature" is a 35 minute dance work created specifically to be adaptable to any space. The audience should be able to watch from all four sides (in the round / 360°) allowing almost everyone to have a front row seat. Audience can be seated on the floor in the front row, on seats and standing up behind. Cushions or benches could also be appropriate.

"Creature" is designed like its predecessor JINX 103 which has been performed in many venues; outdoors and indoors; on the street, in courtyards, theatre foyers, main stages, dance studios and gallery spaces.

Planning times The technical director of the Venue should propose a time for a meeting, a sound check, and rehearsal (one hour) between the sound technician to learn the cue to push "play" during the performance, and dancers of the company, in the performance space the day before or the day of the performance.

Outdoor Performance - in the round / 360°

Creature should be performed in a chosen space/venue which is calm and quiet allowing the audience to concentrate for 35 minutes and hear the songs and complex foot stamping rhythms. Consider is there a noisy road nearby, children's playground, skate park, etc.

The season, the temperature and the time of the performance can also effect the choice of outdoor venue. The dancers can not dance in full sunlight between 11am and 5pm, whereas a shady spot under big trees or in the shade of a building is normally fine.

Space required: 12 metres x 12 metres minimum in total. Height 4 metres minimum. 10m x 10m of flat surface (not on a slope). Ideally a wooden floor, but concrete, bitumen, marble are also possible, we need to hear the stamping of the rhythms on the floor (not possible to dance on grass). The audience can be seated or standing all around the performance space. The audience space is between 1 & 2 metres extra on all 4 sides.

Sound system: Powerful enough for outdoors. (Is it an area with strong winds that may carry the sound away?) This sound system should either not require an electrical currant or come with long cables and extension cords to be at the performance area. Four speakers are ideally placed in all four corners of the performance space the centre. Require either cables for ipod, mp3 player or CD Player.

1 sound technician : One technician who installs the sound system and pushes PLAY to start the music at the given moment. The technician must be the same for each consecutive performance, present at the rehearsal either in the performance space or in a warmup space, to learn the «cues» for the sound track.

Warmup space and dressing room. Or dance studio with dressing room and showers, towels and bottles of water (no bubbles) as well as some little snacks (fruit, nuts, dried fruit, etc.) a place where it is safe for the dancers to leave their belongings.

IF IT RAINS: A second performance venue/location should be planned that is protected from the rain with just a roof or completely indoors, to not end up in the predicament of having to cancel the performance. Examples : Theatre, community hall, gym, gallery, band stand.

Indoor Performance - in the round / 360°

Performance space: Length & Width: 12 x 12 metres minimum. Space for the dancers: 10 x 10 metres.
Space for the audience is between 1 and 2 metres extra on all 4 sides.
Height under the lights : minimum 4 metres.
White dance carpet.

Lights: See light plan pdf. Very simple set up of white lights, down lights and profiles, to cover the entire 10m x 10m performance area. Creature has 4 fronts so the lights should be appropriate for audience on all four sides. No lights on the audience or shining in their eyes.

Space: The dancers will mark out a preset of five points of a large circle with white tape and then with five 3d object we provide.

Sound: A good quality sound system appropriate for "in the round" seating arrangement. Ideally four suspended speakers should be directed on to the dancers in the middle crossing the space for the audience on the opposite side. with CD Player or cables to plug in/connect an iPod or mp3 Player.

1 service: 1 light technician + 1 stage technician + 1 sound technician (4 hours):

If the technicians are versatile (light, sound and stage) we only require 1 technician

Lighting

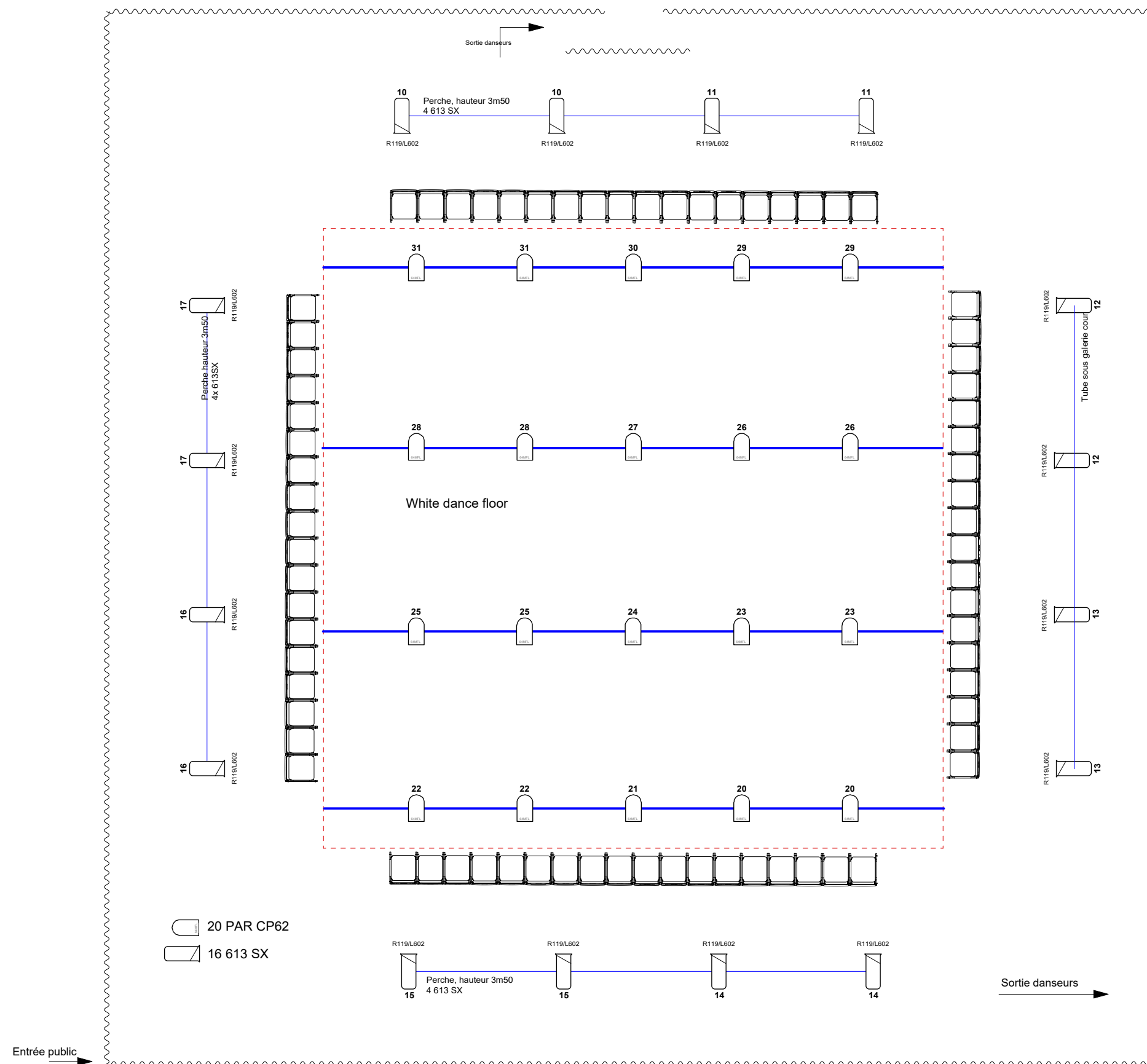
Marking of space on stage and final touches to the stage

Rehearsal

The dancer should have access to the stage two hours prior to the performance to rehearse.

The stage should be cleaned before the rehearsal and before the performance.

Technical questions contact : József Trefeli +4178 709 56 22 Email: jozsef@jozseftrefeli.org



Projet : Creature - Générique

Lieu:

Date: 30.10.15

Echelle: 1:75

Contenu: Plan de feux

Dessiné: VH

Format: A3

Plan #: 001

Revision: A: B C

D E F

G H I

LUMIÈRE ÉLECTRIQUE Laurent Junod
Avenue de Beaulieu 9 / 1004 Lausanne / SUISSE
T: +41 21 624 27 35 / M: +41 78 718 02 84
site web: www.lumiereelectrique.ch / e-mail: info@lumiereelectrique.ch

